



## Semi-dry

# Cordless Diamond Core Bit

Semi-dry wax was enclosed

## Water not needed when drilling hard porcelain

### Enclosed wax must be applied



PAT.P



For drilling apply the semi-dry wax on the diamond edge.

Core drilling is easy.



Blister pack

Semi-dry wax was enclosed

**Matching drill**

Cordless drill / Driver drill / Electric drill (under 400W)

Used on an impact electric driver for drilling porcelain tiles, hard tiles and stone without the need for water.

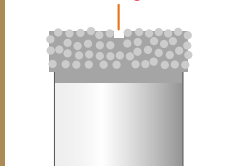
### Just apply the semi-dry wax to the drilling edge.

Due to the special cooling properties in the semi-dry wax, there is no need for using messy water when the wax is applied.

### Specially developed brazed diamonds.

The special brazing process insures strong adhesion of the diamonds along the circumference for long life. Because of good protrusion and exposure of the diamonds, the performance of the diamonds and drilling is excellent. Also, the positioning contributes to long drilling life.

Cutting edge slit and diamond grains

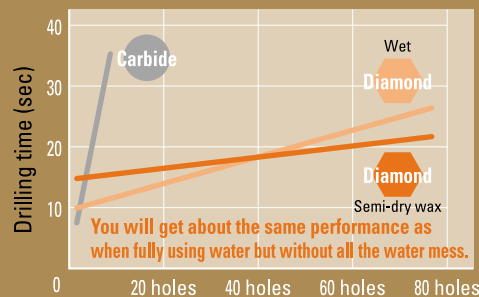


### Excellent durability.

Because of its special diamond brazing process, excellent durability is assured, far better than carbide core drills on the market.

**Drilling data** (Wet drilling)

Material drilled: Ceramic tile Material thickness: 8 mm  
Diameter: 6.0 mm Drill used: Impact driver



Semi-dry Wax



# Cordless Diamond Core Bit **Semi-dry**

Rotation

DJW

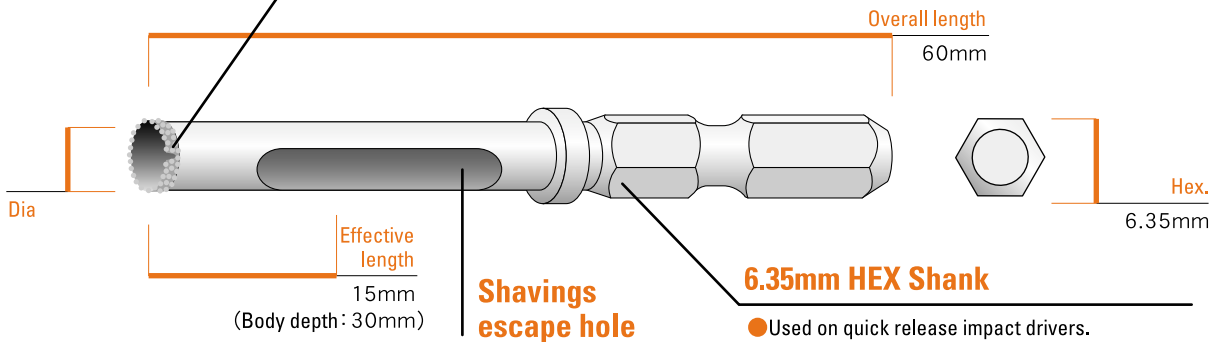
## APPLICATIONS

[ maximum 15 mm ]

Ceramic tile / Stone material tile / Hard tile / Granite stone / Marble / Roof tile

### Braze diamonds

- Using the semi-dry wax, water need not be used on the cutting edges.
- Achieves long life due to the diamond brazing process on the cutting edge.

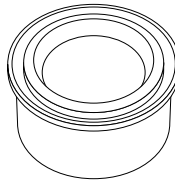


### 6.35mm HEX Shank

- Used on quick release impact drivers.

## Semi-dry Wax

Inner capacity 25g



When the wax is used, no water is required on the edges

Semi-dry wax was enclosed

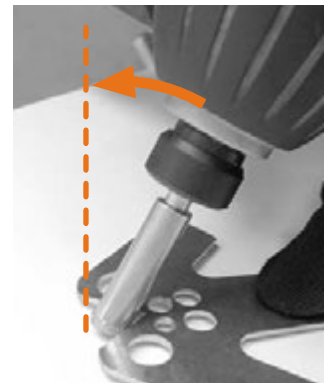
### Cordless Diamond Core Bit (Semi-dry)

Size	Overall length (mm)	Effective length (mm)	Pcs./Box	JAN code (4989270...)
DJW5.0X60S	60	15	5	127081
DJW6.0X60S				127098
DJW6.4X60S				127104
DJW7.0X60S				127111
DJW8.0X60S				127128
DJW10.0X60S				127135
DJW12.0X60S				127142

### Ideal wax amount to apply



### Drilling positioning guide



### Positioning guide W

Code	Matching hole diameter (mm)	JAN code (4989270...)
DJW-PGD	5.0~12.0	128033



PRECAUTIONS

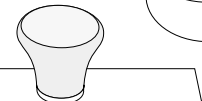
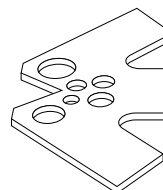
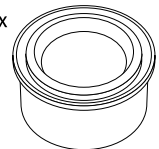
- Do not use any other way than that specified of the electric drill. (Rotation only or use an impact driver)
- Make sure the switch is turned off and unplugged when, attaching and detachment of the tool.
- Use the proper gloves and protective glasses
- Always regularly apply the wax on the cutting edges
- In use or just after use, do not touch the cutting edge.
- Before drilling make sure there is no core slugs inside the core bit
- If there is a desire to use the tool in other applications than presented, discuss it with the manufacturer.
- Read the instruction manual of the electric drill to be used, and please follow those instructions.

### Drilling components

Cordless Diamond Core Bit



Semi-dry wax



Positioning guide

**unika**  
www.unika.co.jp

2-10-6, Iwamoto-cho, Chiyoda-ku, Tokyo,  
101-0032, Japan,  
TEL: 81-3-3864-3321, FAX: 81-3-3864-7746